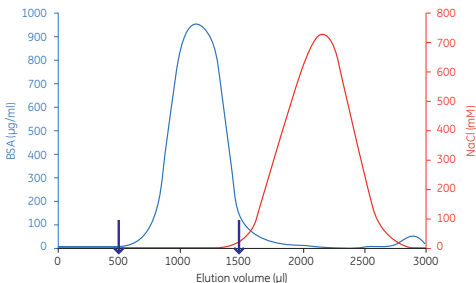


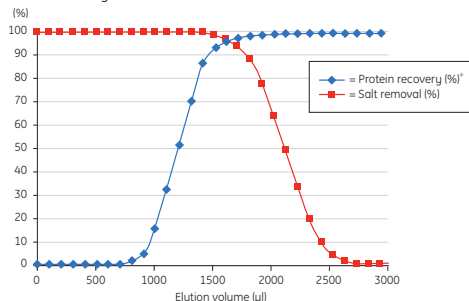
自然落下によるBSA溶液からのNaCl除去

A PD MiniTrap G-25

Elution profile

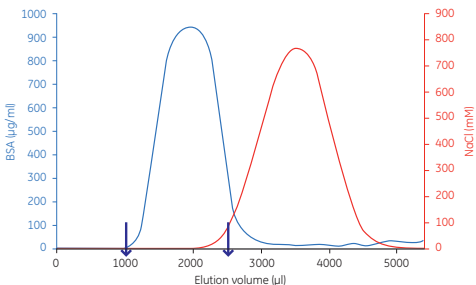


Protein recovery and salt removal* (%)

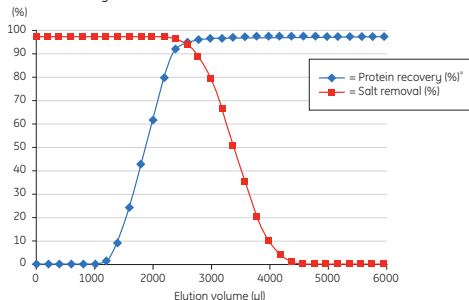


B PD MidiTrap G-25

Elution profile

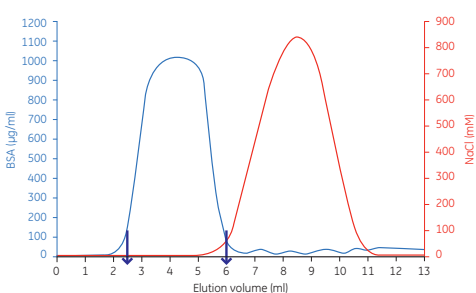


Protein recovery and salt removal* (%)

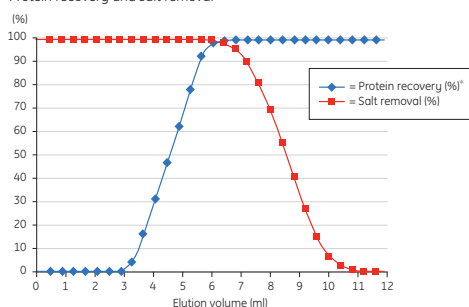


C PD-10 Desalting Column

Elution profile



Protein recovery and salt removal* (%)



1. 回収率 (2本の矢印間で測定)

MiniTrap G-25 および PD MiniTrap G-25: 95% (A, B)

PD-10: 95% 以上 (C)

2. 脱塩効率

PD MidiTrap G-25: 98% (B)

MiniTrap G-25 および PD-10: 99% 以上 (A, C)

Trap products: A) PD MiniTrap G-25 B) PD MidiTrap G-25, and C) PD-10 Desalting Column

Sample: 1000 µg/ml bovine serum albumin (BSA) in 1 M NaCl

Sample volumes: A) 500 µl, B) 1000 µl, and C)

2.5 ml

Equilibration buffer: 超純水

* The recovery curves are normalized against the total amount of loaded sample.